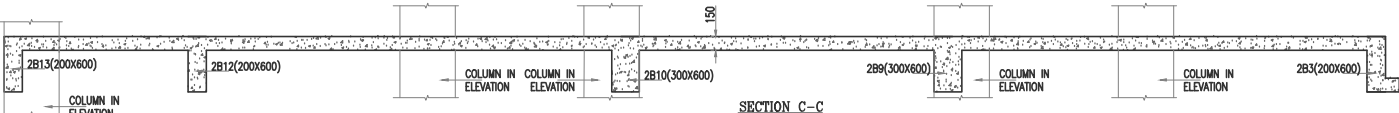
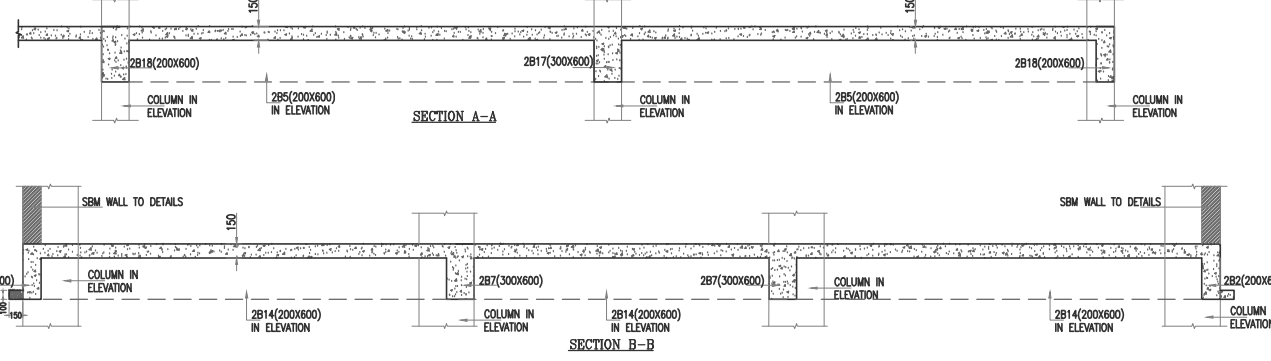
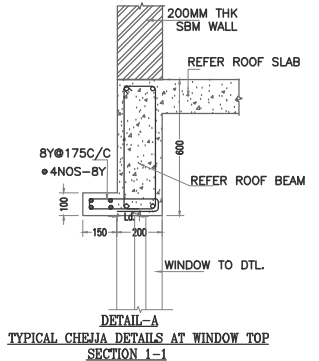
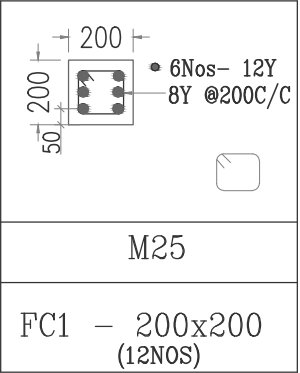


SECOND FLOOR ROOF SLAB & BEAM FORMWORK LAYOUT

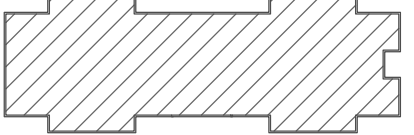
- NOTE:- 1) ALL SLABS ARE 150MM THK U.O.N.
2) 200MM THK SBM WALL LOADS ARE NOT PROVISIONED ON THE ROOF/FLOOR SLABS AND ALL WALLS LESS THAN OR EQUAL TO 100MM THK WALL LOADS ARE PROVISIONED ON THE SLABS.
3) 100MM THK SBM WALL/ WOODEN /FIBRE/WORK STATIONS LOADS ARE PROVISIONED ON THE FLOOR SLABS.
4) PROVIDE 8Y@250C/C DISTRIBUTION STEEL FOR SLAB WHEREVER NECESSARY.



FOR NOTES AND SPECIFICATION REFER
DRAWING NO.
NC/STR/N4/JOB.NO/2022(V)/GTTC- SINDHANOOR/GN&GD/01&01A

NOTES-CAMBER
1) SHUTTERING SHALL BE LIFTED AT THE CENTER OF SIMPLE/ CONTINUOUS SPANS AND FREE END OF CANTILEVERS AS PER DRAWINGS.
a) FREE END OF CANTILEVERS = 15 mm.
b) CENTER OF CAMBER FOR BEAMS
5m to 7m SPAN = 25mm
7m to 9m SPAN = 35mm
9m to 12m SPAN = 50mm
12m to 17m SPAN = 75mm
c) FOR SLABS
4m to 5m SPAN = 15mm
5m to 6m SPAN = 20mm
6m to 7m SPAN = 25mm
2) USE PIN RODS OF SECOND LAYER AND THIRD LAYER REINFORCEMENT IN BEAMS TO BE TIED WITH PIN RODS OF 20Y FOR 12/16/20MM BARS AND 25Y FOR 25/32MM BARS ONLY.
3) CHAIRS TO BE PROVIDED TO SUPPORT TOP REINFORCEMENT IN SLABS USING SUITABLE DIA BARS OF 10MM / 12MM DIA AT 1.5M TO 2.0 M INTERVALS WITH APPROVAL OF ENGINEER/CONSULTANT.

- NOTE: 1) GRADE OF CONCRETE-M25
2) GRADE OF STEEL-Fe550D
3) COVER FOR FLOOR BEAM - 30mm
4) COVER FOR FLOOR SLAB - 25mm



KEY PLAN :

VERIFIED BY

DY. MANAGER-PROJECT
GT&TC

MANAGER-PROJECT
GT&TC

CLIENT :

GOVT. TOOL ROOM AND TRAINING CENTRE
RAJAJINAGAR INDUSTRIAL ESTATE,
BANGALORE-560010

PROJECT:

ESTABLISHMENT OF NEW GTTC CENTRE AT SINDHANOOR
IN RAICHUR DISTRICT.

CONSULTANTS:

NAVEEN CONSULTANTS
ARCHITECTS & ENGINEERING CONSULTANTS
1308, 2nd floor, 2nd Cross, Ashoka Nagar
(Behind B.M.S Engineering College Hostel)
Bangalore - 560050.
Ph-080-26620836 (o), Fax-26620836
Email: naveenconsultants@gmail.com,
naveenconsultants1@gmail.com

TITLE:

BOYS HOSTEL

DRAWING:

SECOND FLOOR ROOF SLAB AND
BEAM FORMWORK LAYOUT

DRAWN BY : GSR

DATE : 14/10/2025

DESIGN BY : MV

SCALE : NTS

CHECKED BY: KVNS

SHEET : A2

DWG NO:

BOYS HOSTEL-08

NC-N4-2022(V)-GTTC-SINDHANOOR-RAICHUR

RELEASED FOR:

Preliminary Drawing Tender Only Information Only For Approval For Construction